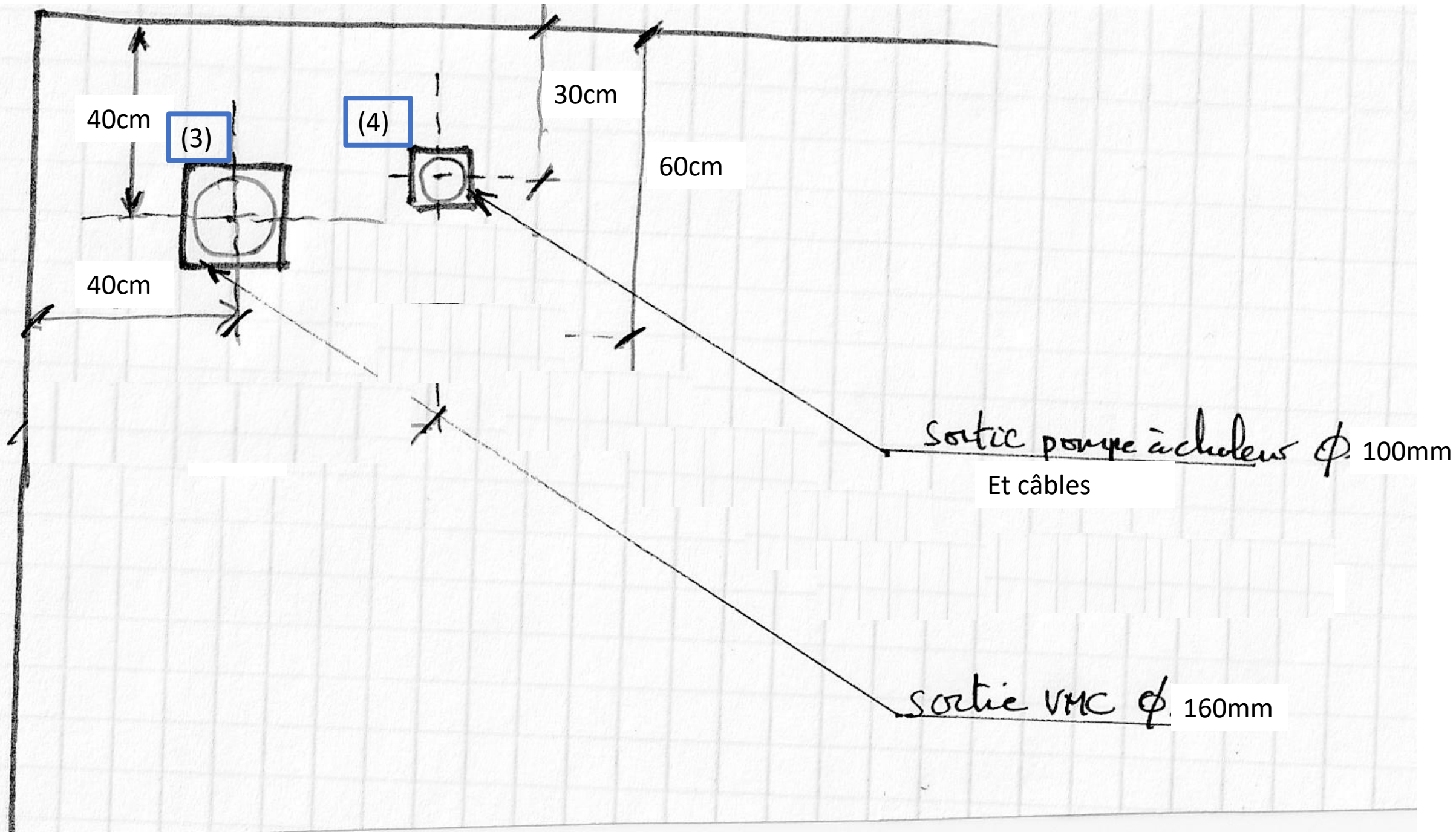


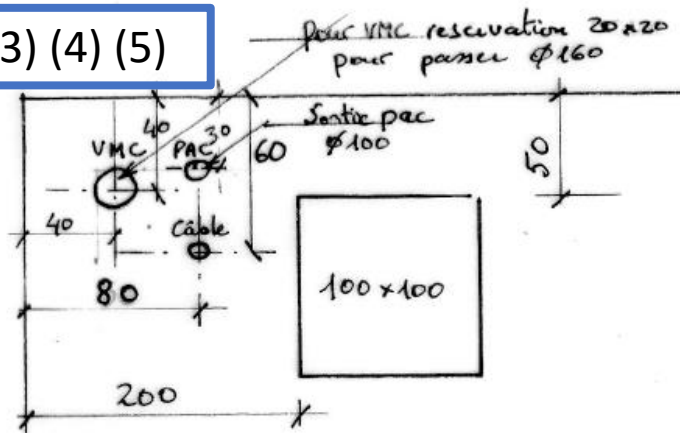
Accessoires

- 2 x EP : Diam 110mm ext 100mm int (1) et (2)
- 1x VMC : diam 160mm → **ok vu sur BL (3)**
- 1x PAC : diam 100mm (4)
- 1 x câbles : diam 50mm → **1 vu sur BL mais pas de dimension (5)**
- Geotextile 300g/m² entre EPDM et gravillons
- Gravillons épaisseur 4cm

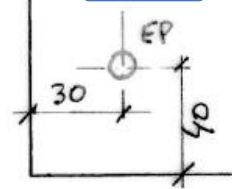


Terrasse

(3) (4) (5)



(1)



4

4

4

4

≈ 510

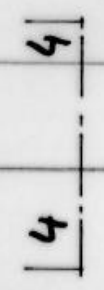
15

1

1

$\approx 13,10$

Terrasse



(2) (5)

