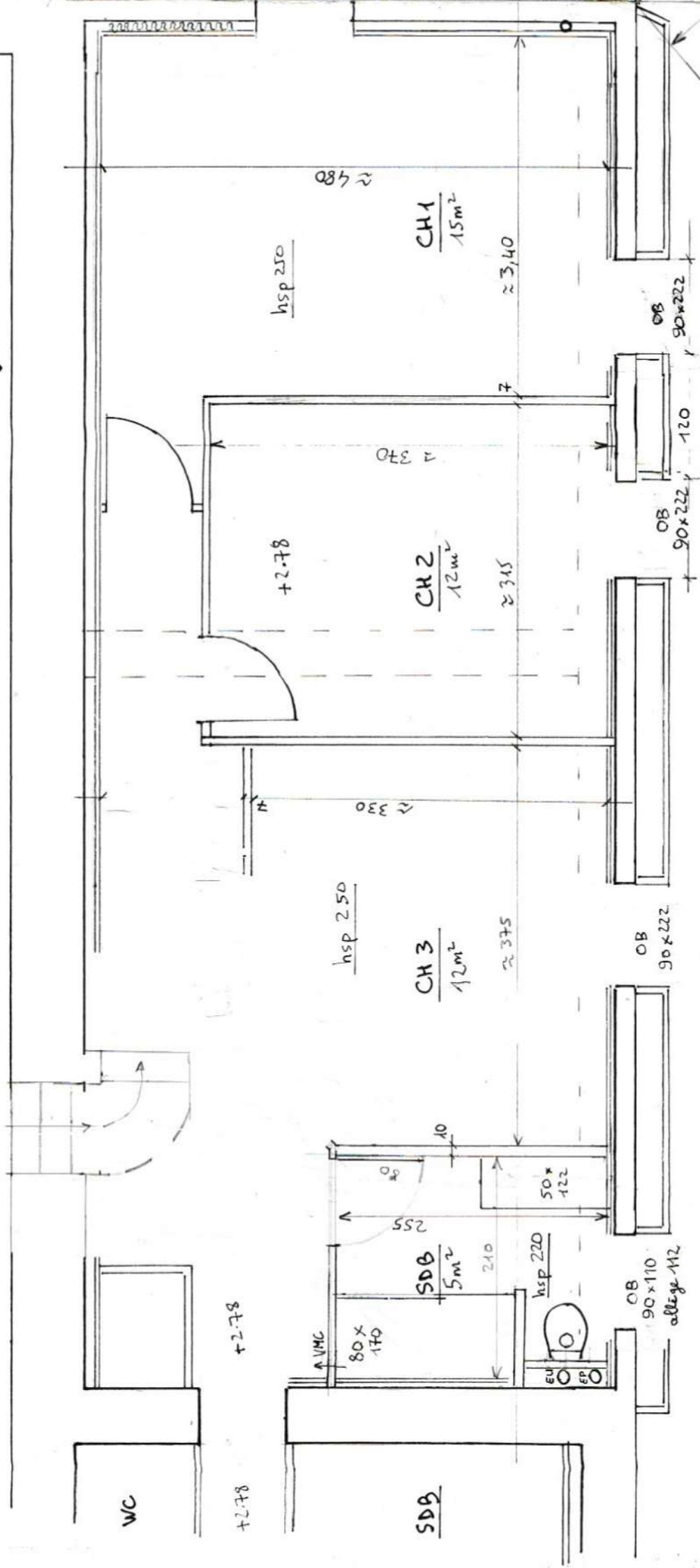
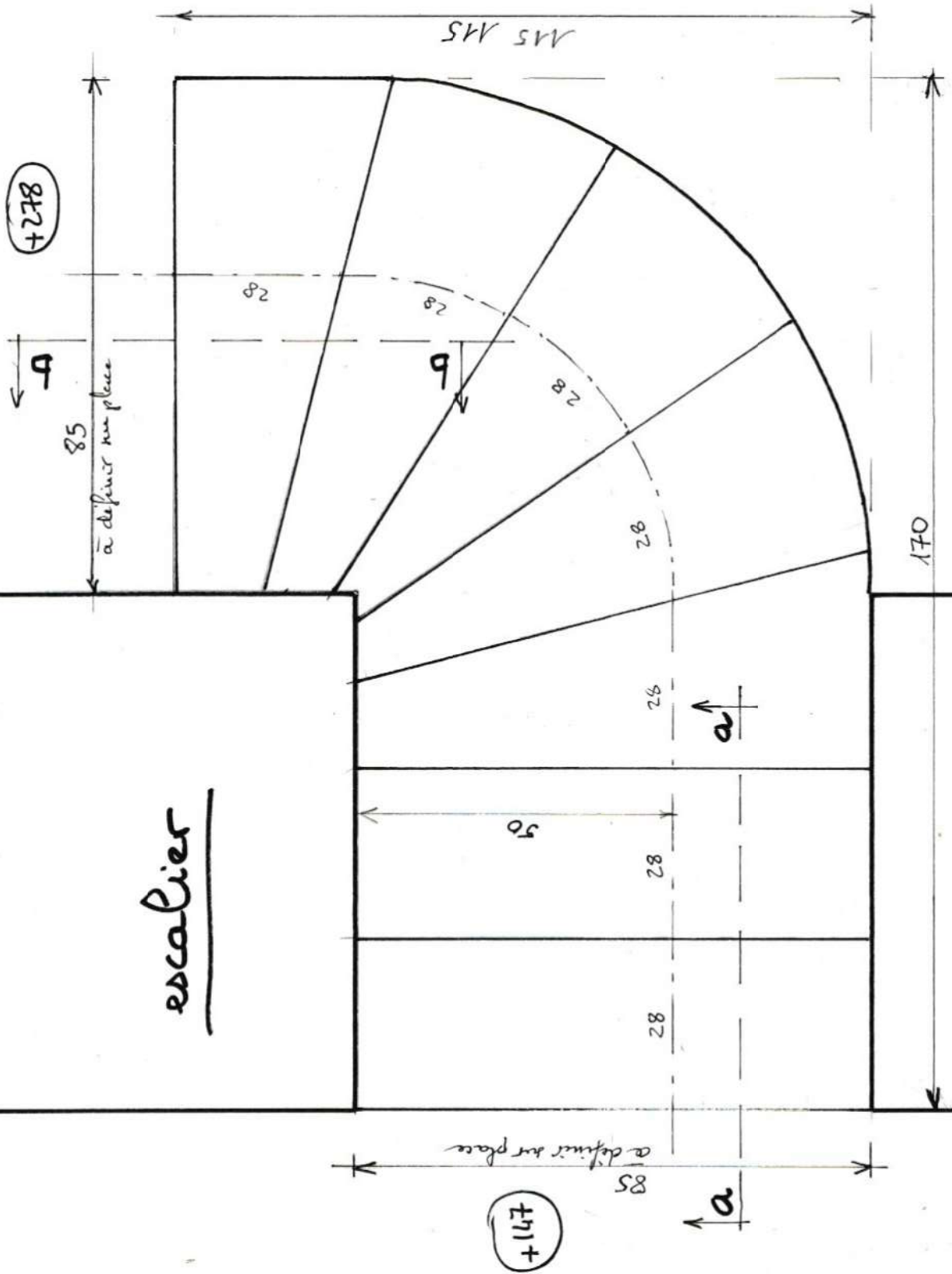
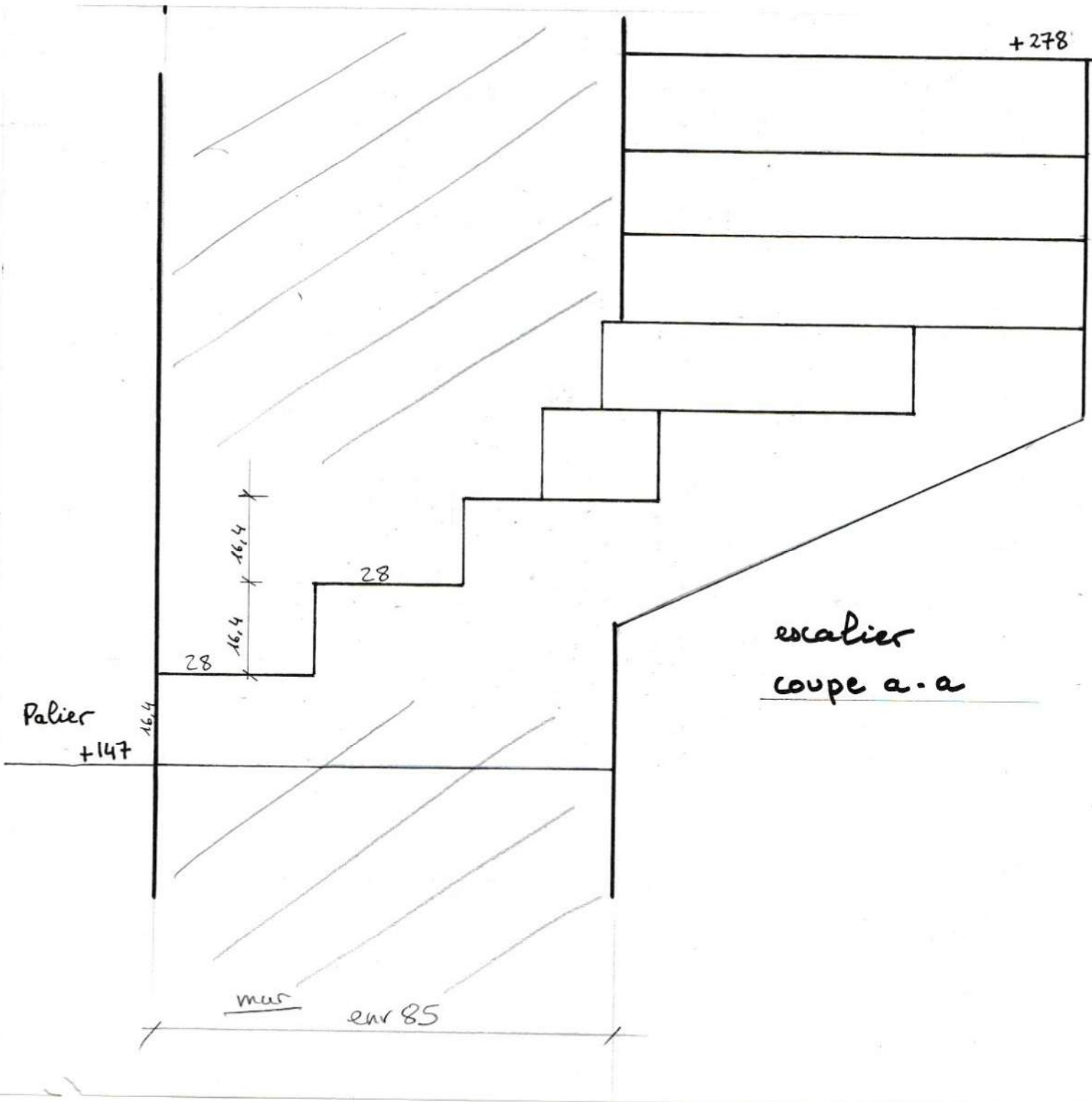


# Etage



escalier





+278

Palier  
+147

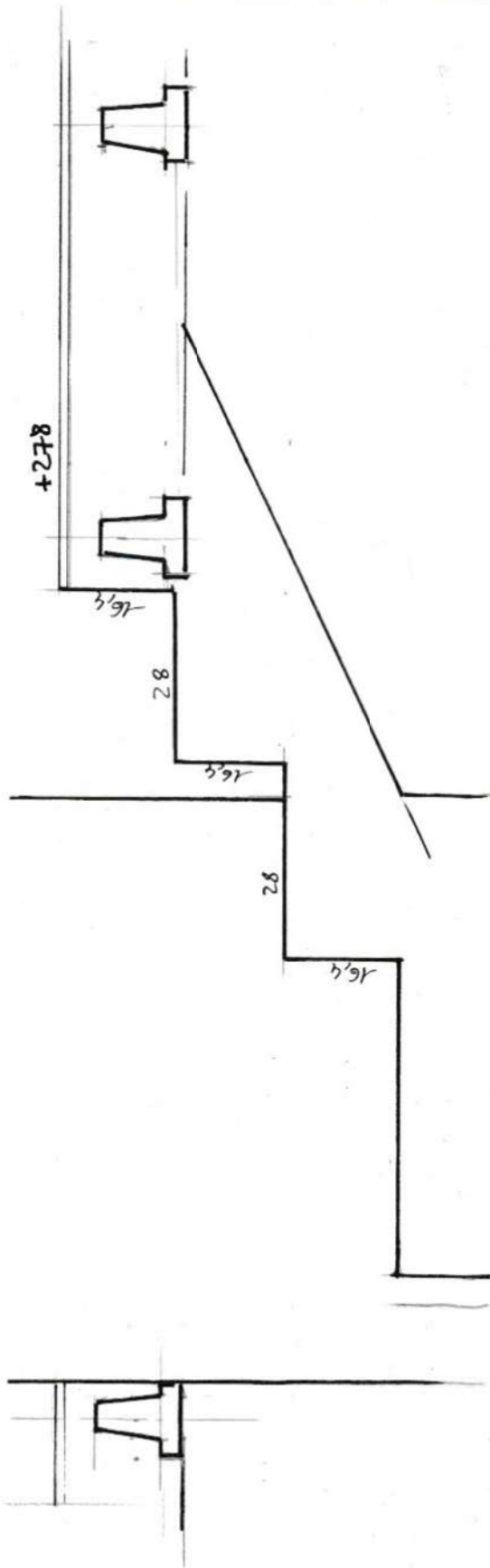
16,4  
16,4  
16,4

28

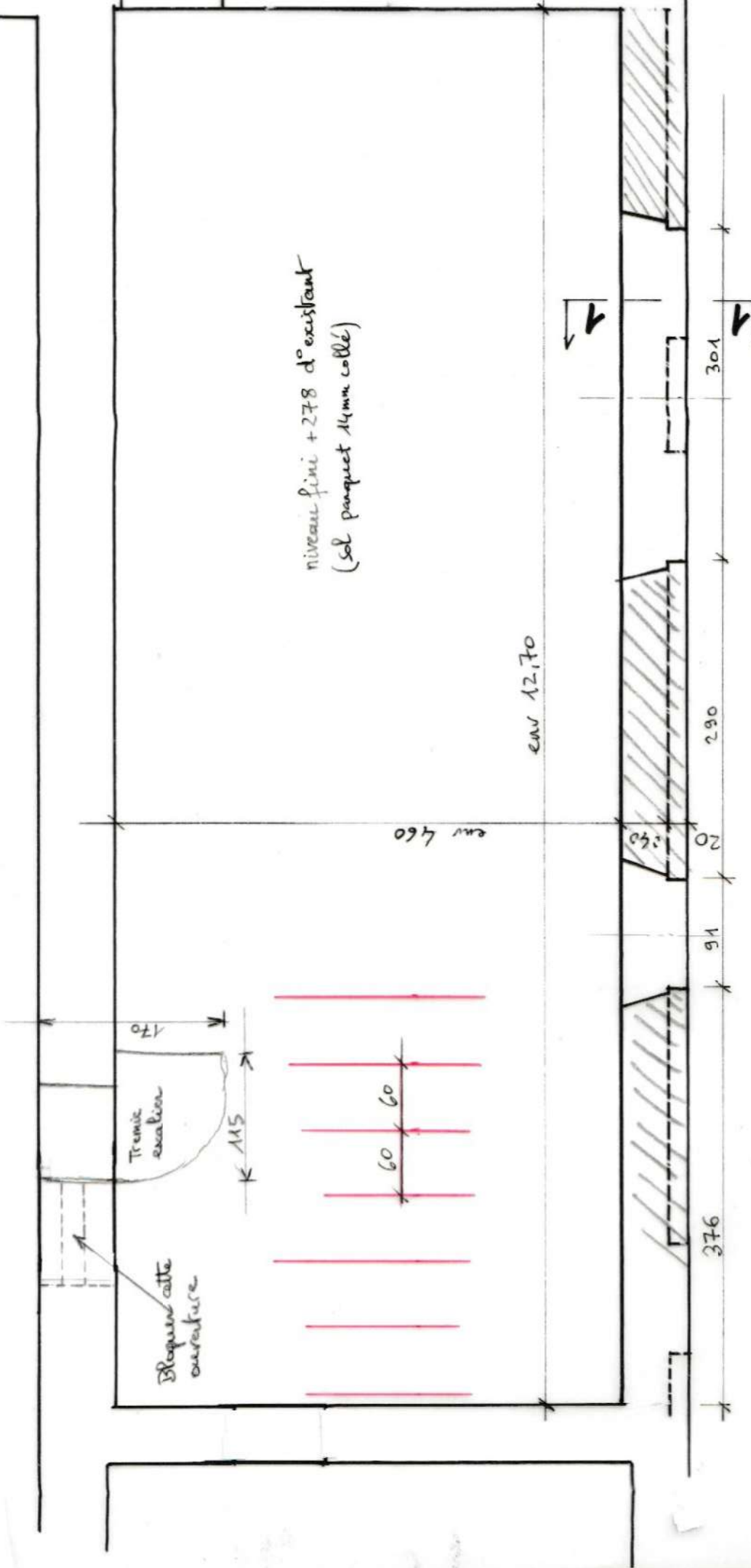
28

mur  
env 85

escalier  
coupe a-a



escalier  
coupe b-b



niveau fini +278 d' existant  
(sol parquet 14mm collé)

env 12,70

env 460

Trémie escalier  
170  
115

Bloquent cette  
ouverture

60  
60

376

91

20

290

301

Plancher haut RC

coulée en